

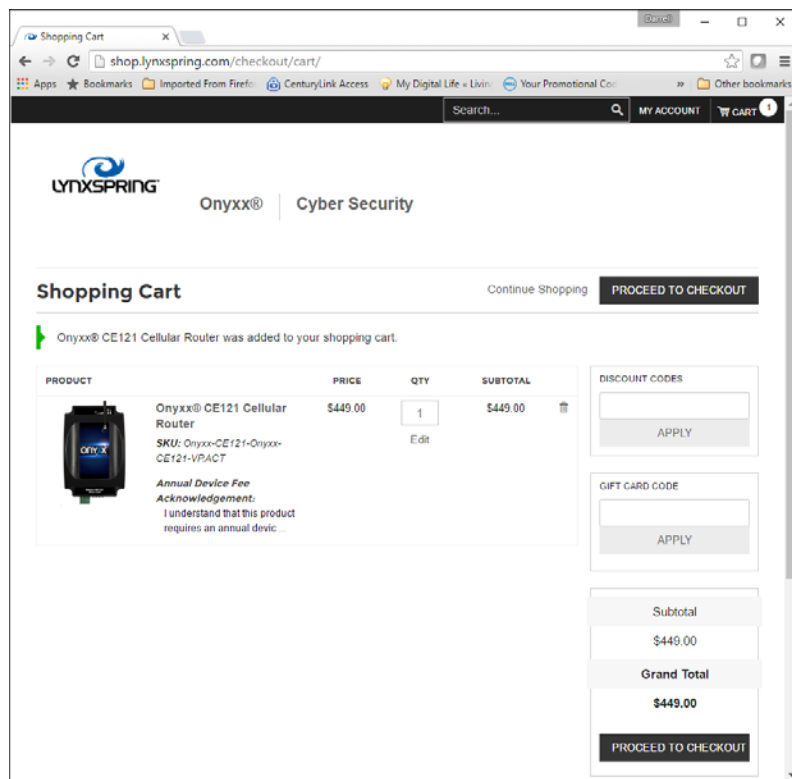


## Onyxx Cellular Router (CE121) and E2E Private Wireless Network VPN Easy Set-Up

The Onyxx® Cellular Router is designed to support secure, remote access and the transmission of data among today's intelligent buildings, energy management systems, machine-to-machine applications, edge devices and Cloud services. It has been designed for simple set-up, installation, commissioning and includes a wireless modem interface allowing instant communication upon startup.

The LynxSpring's E2E Private Wireless Network grants easy access to your systems, devices and equipment using industry-standard Ethernet communications with all the coverage, speed and reliability you need. Different from a public network which is based on open and static IP modems, LynxSpring's E2E Private Wireless Network is purpose-built for data traffic only and designed specifically to meet those high and low data transmission needs.

The following outlines the simple steps for set up:



### Step 1: How to Order

Go To:

[shop.lynxspring.com](http://shop.lynxspring.com)

and purchase your Onyxx-Cellular Router (CE121) *and* the E2E Easy Data Service Plan or contact:

[orders@lynxspring.com](mailto:orders@lynxspring.com)

OR

[sales@lynxspring.com](mailto:sales@lynxspring.com).

## Step 2: How to Set-Up

### Onyxx-Cellular Router Login

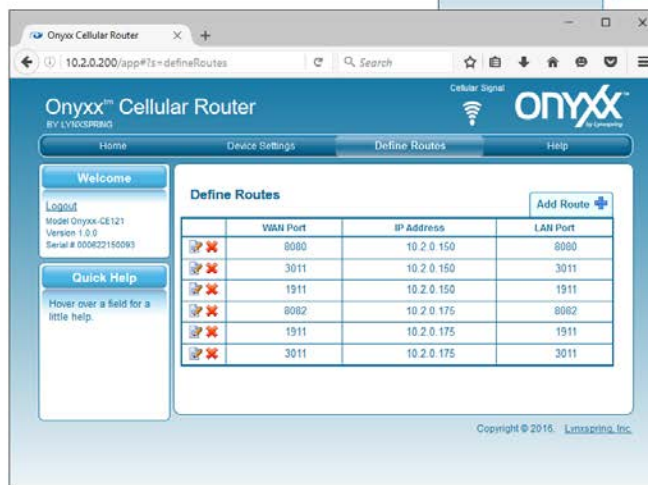
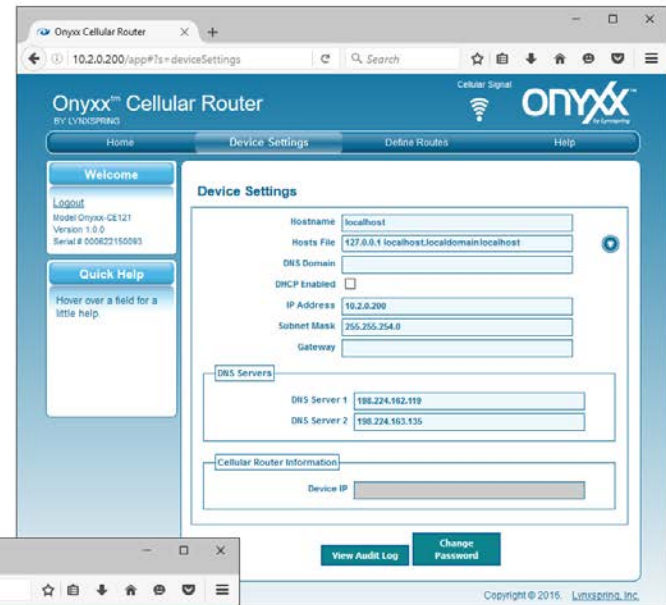
Login to your Onyxx-Cellular Router via the [ADMINISTRATOR LOGIN](#) page using the default password: **onyxxcell**



### TCP/IP Settings

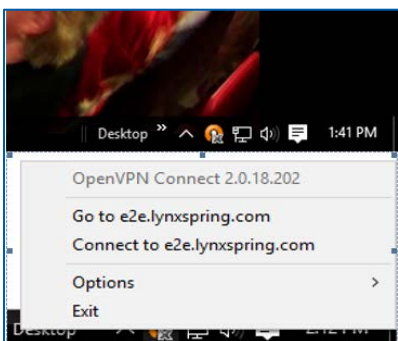
Select the second tab entitled:

[DEVICE SETTINGS](#) and then proceed to set-up your specific IP address by filling-in the pertinent fields.



### Define Routes

Select the third tab entitled: [DEFINE ROUTES](#) and then proceed to edit, add or delete your applicable ports and IP addresses.



### Step 3: How to Access

#### Open VPN Access & Client Login

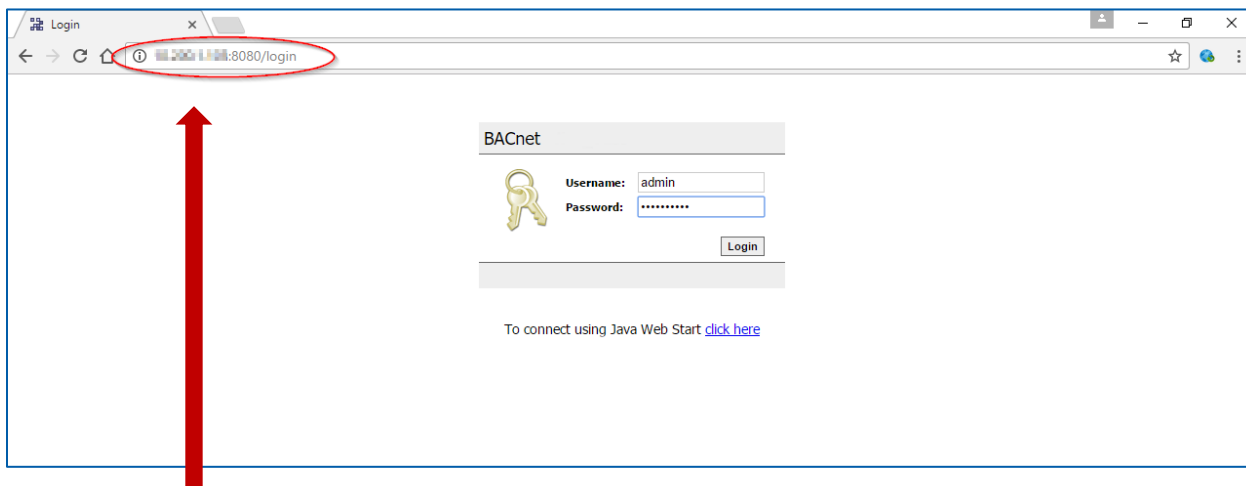
By using any standard web browser, go to: [e2e.lynxspring.com](http://e2e.lynxspring.com) and then select from the drop down list:

[Connect to e2e.lynxspring.com](http://e2e.lynxspring.com).



Next, proceed to login to your VPN account with your username and password provided to you.

For additional assistance refer to the product and service information or contact [support@lynxspring.com](mailto:support@lynxspring.com)



Manually type-in your cellular router's:

- ✓ IP address
- ✓ a colon (:)
- ✓ port number of the downstream device

Example: **XX.X.X.XXX:8080**